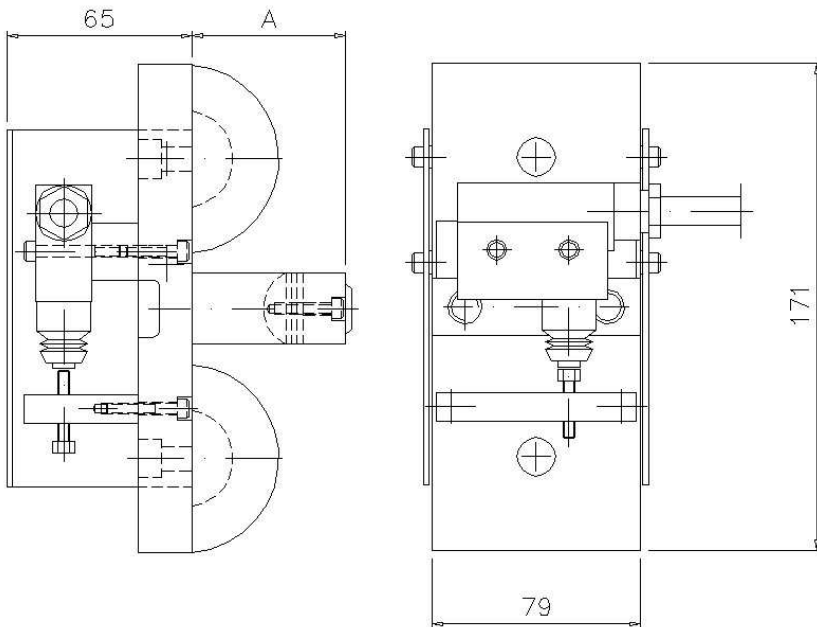


Mechanical limiter for cranes

DIN 15B



Capacity (kg)	Rope Diam. (mm)	"A" (mm)
1000	8 ÷ 12	34
3200	14 ÷ 20	42
6300	22 ÷ 26	48
10000	28 ÷ 32	54

Features

- Limiter for cranes with small dimension
- Direct installing on the rope
- Body cell in galvanized alloy steel
- Easy to install without rope removing required
- Executions for ropes from 8 to 32 mm of diameter
- Capacities until 8000 kg (load on the single rope)
- Suitable for outdoor applications (IP 65)
- Temperature range: -30 ÷ +60°C
- Overload admitted: 150% of the full scale
- Microswitches three poles type (NO, NC, COM)
- Electric connection with 3 meters cable
- Electric insulation : 1000 V (50 Hz) between contacts. 2000 V (50 Hz) and ground
- Voltage max.: 360 V 50 Hz; Current max: 10 A
- Accuracy: +/- 1% (f.s.)
- **Option: second independent threshold**



CAMI S.R.L.

MEASUREMENT INSTRUMENTS

Via Alessandrini, 2 - 20090 TREZZANO S/N (MI)

Tel. 02 4840 0166 - Fax 02 4840 1905

www.cami-it.com - e-mail info@cami-it.com