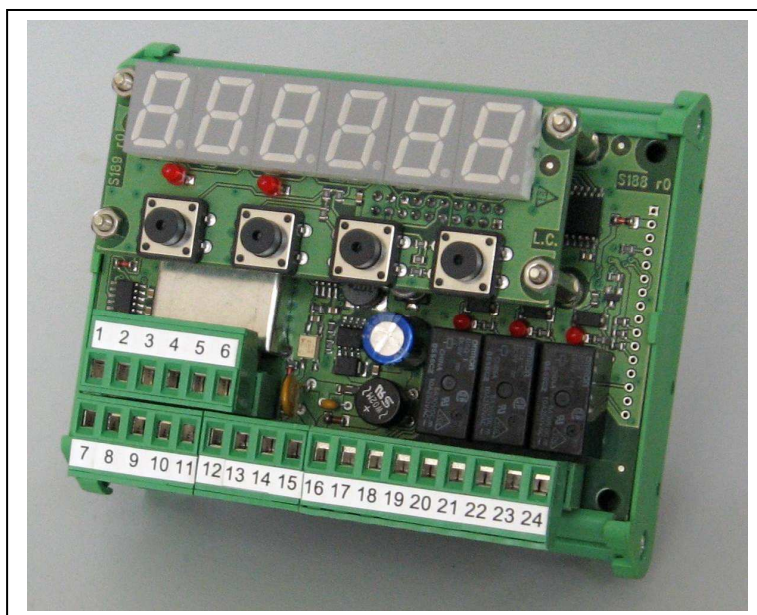


Weighing and limiter unit

CAM 9-N



* **General description.**

Digital unit designed to be applied as limiter and weighing device on cranes and in general on handling and lifting machines.

This unit has three independent and settable alarm thresholds with relays output.

The CAM9-N can be connected with any load cell sensor as tension/compression load cells, dynamometric load pins, tension-meters, torque meters.

The thresholds set up, the calibration and the general parameter setting can be realized directly by the on frontal panel with keyboard and display.

During the normal operation, local display shows the instant measured weight.

The CAM9-N is assembled on a support for mounting in electric cabinets by a standard DIN bar; as option the unit can be supplied in a IP56 electrical box for external application with its power supply unit.

CAM9-N is available in **summary version** for systems with multiple lifts as limiter for single and sum lift. Multiple CAM9-N can be connected together by the inside serial ports; in this configuration each units has thresholds for single and sum loads.

CAM9-N is also a precise weighing system, it can be connected to a range of local large displays or other devices to transit the measure by cable or wireless. Calibration can be realized on site in theoretical way or using a calibrated weight.

CAMI S.R.L.

MEASUREMENT INSTRUMENTS

Via Alessandrini, 2 - 20090 TREZZANO S/N (MI)

Tel. 02 4840 0166 - Fax 02 4840 1905

www.cami-it.com - e-mail info@cami-it.com

- **Technical features.**

Working temperature range: $-10 \div 40^{\circ}\text{C}$

Voltage supply: $12 \div 24 \text{ V ac/dc}$

External voltage supply unit (option): 48V – 110V - 220V ac (input voltage from plant)

Power max.: 5 VA

Load cell connection : 6 wires

Load cell voltage supply: 5Vcc / 80mA (max 4 load cells 350 Ohm in parallel connection)

Dimensions card: 113x93x65 mm

Dimensions IP56 electric box (option): 240x190x90 mm

Connections: extractable screwed terminal board (type 5.08)

Local Display: 6 digit red LED (height 14 mm)

Local keyboard for programming and setting: with nr. 4 mechanical keys

Internal resolution: 16 bit

Reading frequency: $0.1 \div 5 \text{ Hz}$ (selectable)

Digital filter: adjustable

Calibration and zero tare: setting by local keyboard

Thresholds alarms: nr. 3 independent output with relays (24 V cc/ac)

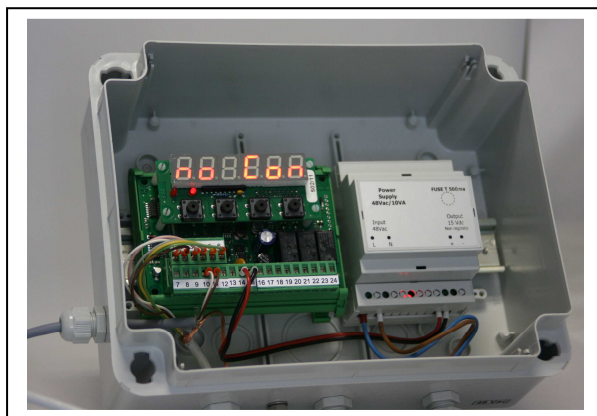
Remote zero tare: nr.1 input

Alarm for cable interruption or load cell damage

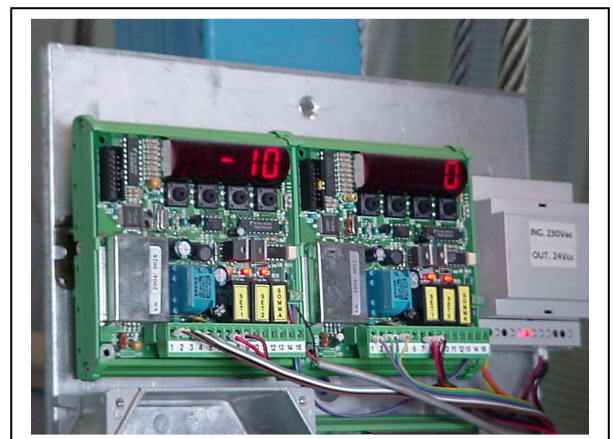
Serial output (Rs 232 and Rs485) for external devices

Analogue output (optional): $0 \div 10\text{V}$; $0 \div 5 \text{ V}$; $0 \div 20\text{mA}$; $4 \div 20\text{mA}$

Code and standard applied: EN50081-1; EN50082-2 per EMC ; EN61010-1



CAM9N installed in electric box with external voltage supply unit



NR.2 CAM9N installed in SUMMARY VERSION

CAMI S.R.L.

MEASUREMENT INSTRUMENTS

Via Alessandrini, 2 - 20090 TREZZANO S/N (MI)

Tel. 02 4840 0166 - Fax 02 4840 1905

www.cami-it.com - e-mail info@cami-it.com